

VCS Case Study: Pickle Line

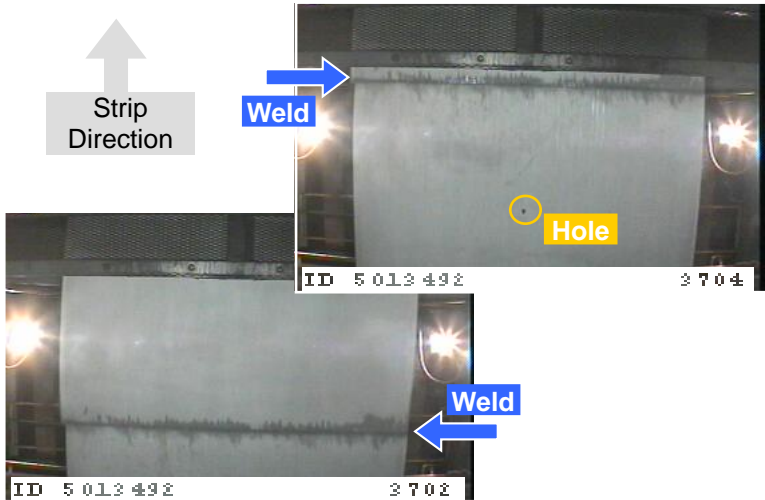
Weld Tracking Analysis & Verification

Problem

Weld footage information, passed from a Pickle Line to a Tandem Mill, was not always accurate. Because of this, welds would occasionally run through the Tandem Mill causing a roll mark and requiring a roll change.

Solution

A VCS was installed to capture the strip footage in 2' increments. Engineering personnel, using the VCS and the strip footage embedded on each image, verified the reliability of a new weld tracking system.



Results

- β Reduced number of roll changes at Tandem Mill
- β Eliminated reprocessing costs



4807 Rockside Road
Cleveland, Ohio 44131 USA
Tel: 216.447.8333
Info@BenchmarkAutomation.com
www.BenchmarkAutomation.com